



Themes

- Pet Friends
- Gardening and Growing
- Dairy Days
- Pond Life

Vocabulary

cat, dog, gardening tools, flowers, milk, ice cream, frog, ducks

Nursery Rhyme

Where, Oh Where?
I Had a Little Turtle

Sign Language



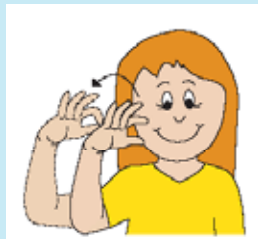
mommy
With open hand,
tap chin twice.



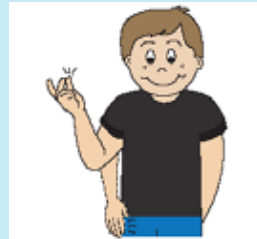
daddy
With open hand,
tap forehead twice.



milk
Right hand squeezes
as if milking a cow.



cat
Pinch together index finger and thumb
near cheek as if pulling whiskers.



dog
Snap fingers twice using thumb and
middle finger, or pat right thigh twice.

Colors/Shapes



Opposites

tall/short

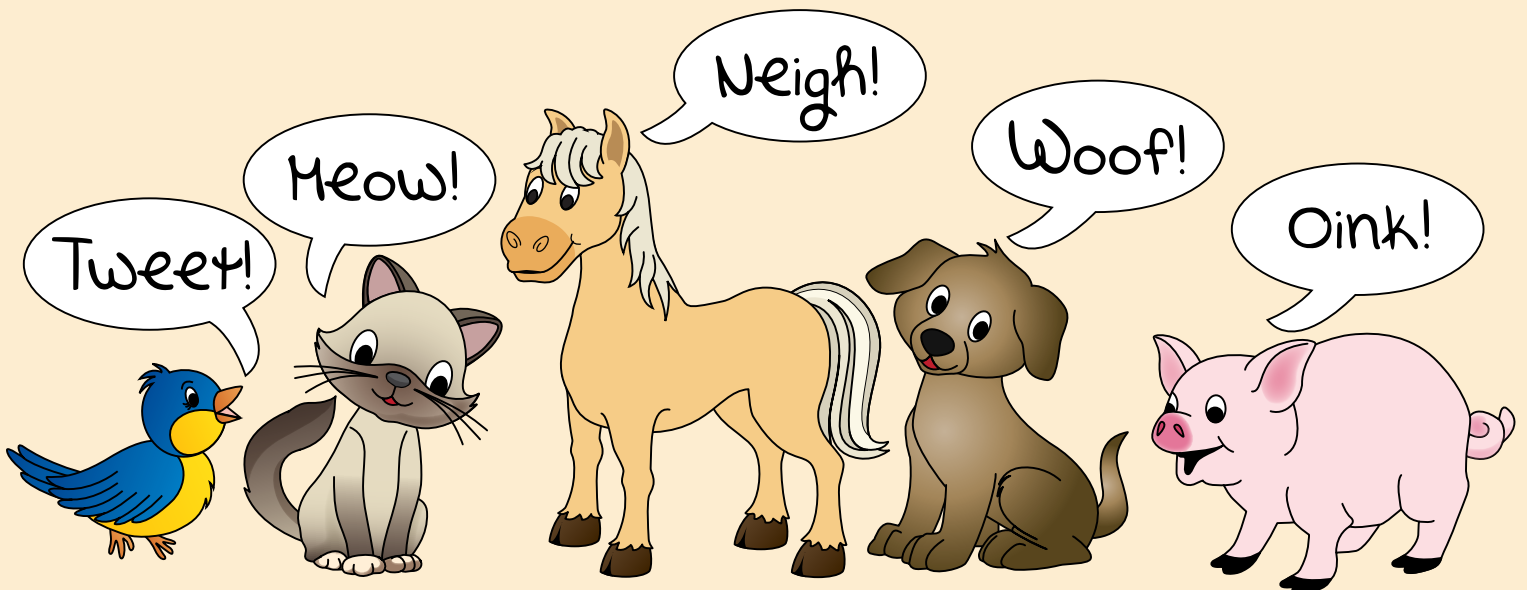
Help Me Grow!

Babies and toddlers love making sounds! Playing with sound is an important early literacy skill.

Observe and name each pet with your child. Make each pet's sound together.

Do you have a pet at home? Does it make the same sound as a pet seen here or something different?

Notice the sounds of other pets and animals together as you explore outside.



FAMILY CONNECTION

Activities

• Provider Appreciation Day

This event takes place on Friday, May 6 this year. It's a great time to let providers know how much they are valued! Read more at providerappreciationday.org.

• Watching a Seed Grow

Is there a place at home where you could plant a seed? It could be in a sunny window or outdoors depending on your space. Let your child help! You may talk about how the plant gets taller and taller!

• Silly Singing

Use animal sounds instead of words as you sing a favorite song together. Try mooing as you sing "Twinkle, Twinkle, Little Star" or croaking like a frog for "Row, Row, Row Your Boat."

• Animal Moves

Join your child in moving like animals! Arch your backs like cats, move on all fours like a cow, hop like a frog, or creep slowly like a turtle.

Recipe

Dairy Delicious Parfait

plain or vanilla Greek yogurt
fresh fruit
granola

June is National Dairy Month! Celebrate with these yummy parfaits. Wash and chop any fruit you and your child enjoy. Layer granola, plain or vanilla Greek yogurt, and the fruit in a clear plastic cup or parfait dish. Enjoy!



Songs

Pet Care

Sung to "This Old Man"

Gentle hands, gentle hands,
Handle pets with gentle hands.
If you're rough, a pet won't like it very much.
Always use a gentle touch.

Loving care, loving care,
Handle pets with loving care.
Oh, your pets need food and water every day,
And they need time to run and play.



Splash!

Sung to "I'm Bringing Home a Baby Bumblebee"

I'm walking round the pond to look around.
My feet are squishing in the soggy ground.
I see (a beaver gnawing on a tree).
Spoken: Crunch, crunch, crunch. Timber! Splash!

Repeat with:

a turtle creeping on a rock
Spoken: Creep, creep, creep. It's diving! Splash!

a frog that's hopping on a log
Spoken: Croak, croak, croak. It's jumping! Splash!

Book List

Wake Up, Color Pup
by Taia Morley

Growing Vegetable Soup
by Lois Ehlert

My Big Animal Book
by Roger Priddy

Peek-a Moo!
by Nina Laden

The Tiny Seed
by Eric Carle

My Little Pond
by Katrin Wiehle

Reminders
